

The power of Christie's: Now in your neighborhood

Special Properties Real Estate Services Published 10:56 a.m. ET March 23, 2017 | Updated 8:37 a.m. ET April 26, 2017



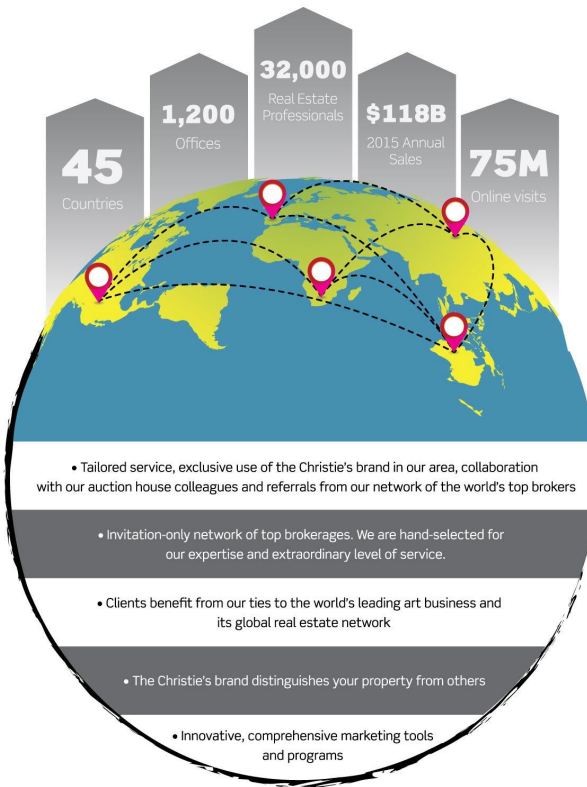
(Photo: Alex Gregorek/Special Properties Real Estate)

Special Properties Real Estate Services has been awarded a new long-term contract with Christie's International Real Estate, which expands their existing territory to new territories in Bergen, Hudson, Essex, Passaic, Warren, and Sussex Counties.

"Special Properties has long demonstrated a commitment to Christie's trust values of expertise, client care, and discretion, while embracing our network's emerging opportunities. Expanding the company's market scope is deserved and welcomed. We look forward to continuing to support and promote Special Properties as a luxury leader in their local marketplace by providing them with the global reach of Christie's," said Kathleen Coumou, Executive Director of Christie's International Real Estate.

Now in your Neighborhood

THE POWER OF CHRISTIE'S



TOUR OUR PROPERTIES



WESTERN BERGEN COUNTY
PASSAIC COUNTY

HUDSON COUNTY
WARREN COUNTY

SUSSEX COUNTY
ESSEX COUNTY

BERGEN COUNTY OFFICE LOCATIONS:

1009 MacArthur Boulevard
Mahwah, NJ 07430
201.962.9555

837 Franklin Lake Road
Franklin Lakes, NJ 07417
201.904.2085

50 W Ridgewood Avenue
Ridgewood, NJ 07450
201.962.9552

